



LOCATION PLAN (SCALE : N.T.S)

FIRE SERVICES NOTES:

1. MISCELLANEOUS F.S. INSTALLATION

- 1.1 PORTABLE FIRE EXTINGUISHER WITH SPECIFIED TYPE AND CAPACITY TO BE PROVIDED AT LOCATIONS AS INDICATED ON PLANS.
- 1.2 SUFFICIENT EMERGENCY LIGHTING SHALL BE PROVIDED THROUGHOUT THE ENTIRE BUILDINGS/STRUCTURES IN ACCORDANCE WITH BS 5266-1:2016, BS EN 1838:2013 AND FSD CIRCULAR LETTER NO. 4/2021.
- 1.3 SUFFICIENT DIRECTIONAL AND EXIT SIGN SHALL BE PROVIDED IN ACCORDANCE WITH BS 5266-1:2016 AND FSD CIRCULAR LETTER 5/2008.
- 1.4 NO EMERGENCY GENERATOR TO BE PROVIDED FOR SERVING THE EMERGENCY POWER. DUPLICATED POWER SUPPLIES FOR ALL FIRE SERVICES INSTALLATIONS COMPRISING A CABLE CONNECTED FROM ELECTRICITY MAINS DIRECTLY BEFORE THE MAIN SWITCH.
- 1.5 WHEN A VENTILATION/AIR CONDITIONING CONTROL IS PROVIDED, IT SHALL STOP MECHANICALLY INDUCED AIR MOVEMENT WITHIN A DESIGNATED FIR COMPARTMENT.
- 1.6 NO DYNAMIC SMOKE EXTRACTION SYSTEM SHALL BE PROVIDED SINCE EITHER THERE BE NO FIRE COMPARTMENT EXCEEDING 7000 CUBIC METRES OR THE AGGREGATE AREA OF OPENABLE WINDOWS OF THE RESPECTIVE COMPARTMENT EXCEEDS 6.25% OF THE FLOOR AREA OF THAT COMPARTMENT.

2. STAND-ALONE FIRE DETECTOR

- 2.1 STAND-ALONE SMOKE DETECTOR SHALL BE PROVIDE IN ACCORDANCE WITH THE "STAND-ALONE FIRE DETECTOR GENERAL GUIDELINES ON PURCHASE, INSTALLATION & MAINTENANCE [SEPTEMBER 2021].
- 2.2 AN INDEPENDENT FIRE DETECTION SYSTEM SHALL BE INSTALLED ON EACH FLOOR OR IN EACH UNIT.
- 2.3 THE DETECTORS OF EACH SYSTEM SHALL BE POWERED BY AC SUPPLY.
- 2.4 EACH DETECTOR SHALL BE CONNECTED TO A BACK-UP BATTERY.
- 2.5 DETECTORS SHALL BE INSTALLED ON THE CEILING.
- 2.6 WHEN THE DOORS OF ALL ROOMS ARE SHUT AND IF ANY ONE OF THE DETECTORS IS ACTUATED, A SOUND VOLUME OF NOT LESS THAN 60 DECIBEL(A) SHALL BE MEASURED IN ALL ROOMS OR LIVING ROOMS ON THE SAME FLOOR.

3. AUTOMATIC SPRINKLER SYSTEM

- 3.1 AUTOMATIC SPRINKLER SYSTEM SUPPLIED BY A 135,000L SPRINKLER WATER TANK AND HAZARD CLASS OH3 SHALL BE PROVIDED TO THE ENTIRE BUILDING/STRUCTURE IN ACCORDANCE WITH LPC RULES INCORPORATING BS EN12845 : 2015 AND FSD CIRCULAR LETTER 5/2020. THE SPRINKLER TANK, SPRINKLER PUMP ROOM, SPRINKLER INLET AND SPRINKLER CONTROL VALVE GROUP SHALL BE CLEARLY MARKED ON PLANS.
- 3.2 THE CLASSIFICATION OF THE AUTOMATIC SPRINKLER INSTALLATION TO BE ORDINARY HAZARD GROUP 3.
- 3.3 ONE NUMBER 135,000 LITRES SPRINKLER WATER TANK TO BE PROVIDED AS INDICATED ON PLANS.
- 3.4 ALL INSTALLED SPRINKLER SHOULD BE PENDENT TYPE AND THE TEMPERATURE RATING OF SPRINKLER HEAD SHALL BE 68°C UNLESS OTHERWISE SPECIFIED.
- 3.5 SPRINKLER CONTROL VALVE SET AND SPRINKLER INLET TO BE PROVIDED AS INDICATED ON PLANS.
- 3.6 ALL SPRINKLER PIPE SIZE SHOULD BE ø32mm UNLESS SPECIFY.
- 3.7 TYPE OF STORAGE METHOD FOR THE BUILDING IS AS FOLLOWS:
(A) STORAGE CATEGORY : CATEGORY (I)
(B) STORAGE HEIGHT : NOT EXCEEDING 4M
(C) STORAGE : ST1
- 3.8 STORAGE BLOCK SHOULD BE SEPARATED BY AISLES NO LESS THAN 2.4m WIDE.
- 3.9 STORAGE SHOULD BE CONFINED TO BLOCKS NOT EXCEEDING 50m² IN PLAN AREA FOR CATEGORY I.

LEGEND (FOR SCHEMATIC DIAGRAM)

- HOSE REEL W/ LOCKABLE GLASS FRONTED NOZZLE BOX, STRIKER, C/W FIRE ALARM BELL & BREAK GLASS UNIT
- 150mm FIRE ALARM BELL
- BREAK GLASS UNIT
- FAST RESPONSE TYPE SPRINKLER HEAD
- FLOW SWITCH
- MONITORED GATE VALVE
- SPRINKLER ZONE SUBSIDIARY CONTROL VALVE ASSEMBLY INCLUDES ZONE SUBSIDIARY CONTROL VALVE, FLOW SWITCH, TEST GATE VALVE AND DRAIN VALVE
- GATE VALVE
- NON RETURN VALVE
- VORTEX INHIBITOR
- BALL FLOAT VALVE
- PRESSURE SWITCH
- PRESSURE GAUGE WITH COCK
- AUTOMATIC AIR VENT WITH COCK
- SPRINKLER / HOSE REEL PIPE
- SPRINKLER CONTROL VALVE SET
- LEVEL SWITCH (HIGH LEVEL SIGNAL & LOW LEVEL SIGNAL)
- FLEXIBLE CONNECTOR
- CHECK METER POSITION
- PLUG
- Y-STRAINER
- SPRINKLER / F.S. INLET
- SPRINKLER PROVING PIPE

LEGEND (FOR LAYOUT PLAN)

- HOSE REEL W/ LOCKABLE GLASS FRONTED NOZZLE BOX, STRIKER, C/W FIRE ALARM BELL & BREAK GLASS UNIT
- 150mm FIRE ALARM BELL
- BREAK GLASS UNIT
- SPRINKLER HEAD
- SPRINKLER HEAD (DOUBLE LAYER)
- FLOW SWITCH
- MONITORED GATE VALVE
- SPRINKLER ZONE SUBSIDIARY CONTROL VALVE ASSEMBLY INCLUDES ZONE SUBSIDIARY CONTROL VALVE, FLOW SWITCH, TEST GATE VALVE AND DRAIN VALVE
- GATE VALVE
- NON RETURN VALVE
- VORTEX INHIBITOR
- BALL FLOAT VALVE
- SPRINKLER / HOSE REEL PIPE
- PRESSURE SWITCH
- SPRINKLER CONTROL VALVE SET
- CHECK METER POSITION
- SPRINKLER / F.S. INLET
- 5kg CO2 TYPE FIRE EXTINGUISHER
- 4kg DRY POWDER TYPE FIRE EXTINGUISHER
- PUMP
- 150mm WATER ALARM GONG
- EMERGENCY LIGHTING
- EXIT SIGN
- ADDRESSABLE TYPE FIRE ALARM PANEL
- PUMP CONTROL PANEL
- WHEELED TYPE DRY CHEMICAL FIRE EXTINGUISHER
- STAND-ALONE SMOKE DETECTOR (220V WITH BATTERY BACKUP)

ABBREVIATION

- H.R. HOSE REEL
- F.S. FIRE SERVICES
- SPR. SPRINKLER
- U/G UNDERGROUND
- T/A TO ABOVE
- T/B TO BELOW
- F/A FROM ABOVE
- F/B FROM BELOW
- H/L HIGH LEVEL
- M/L MIDDLE LEVEL
- L/L LOW LEVEL
- W/ WITH
- FFL FINISHED FLOOR LEVEL
- FE FIRE EXTINGUISHER
- DP DESIGN POINT

COLOUR CODE

PIPE SIZES	COLOUR
ø25mm	LIGHT GREEN
ø32mm	RED
ø40mm	PURPLE
ø50mm	YELLOW
ø65mm	BLUE
ø80mm	GREEN
ø100mm	LIGHT BROWN
ø150mm	DEEP BROWN

DRAWING LIST:

DRAWING NO.	REVISION	DRAWING TITLE
FS-01	C	F.S. NOTES., BLOCK PLAN, LEGEND, ABBREVIATION, DRAWING LIST, PIPE MATERIAL SCHEDULE, PUMP SCHEDULE, VERTICAL LINE DIAGRAM,
FS-02	C	FIRE SERVICES INSTALLATION LAYOUT PLAN
FS-03	A	6.25% WINDOW CALCULATION

REV	DESCRIPTION	DATE	BY
C	FSD SUBMISSION	19-05-2026	WC
B	FSD SUBMISSION	26-04-2026	WC
A	FSD SUBMISSION	19-04-2026	WC

FSI CONTRACTOR

East Power Engineering Limited



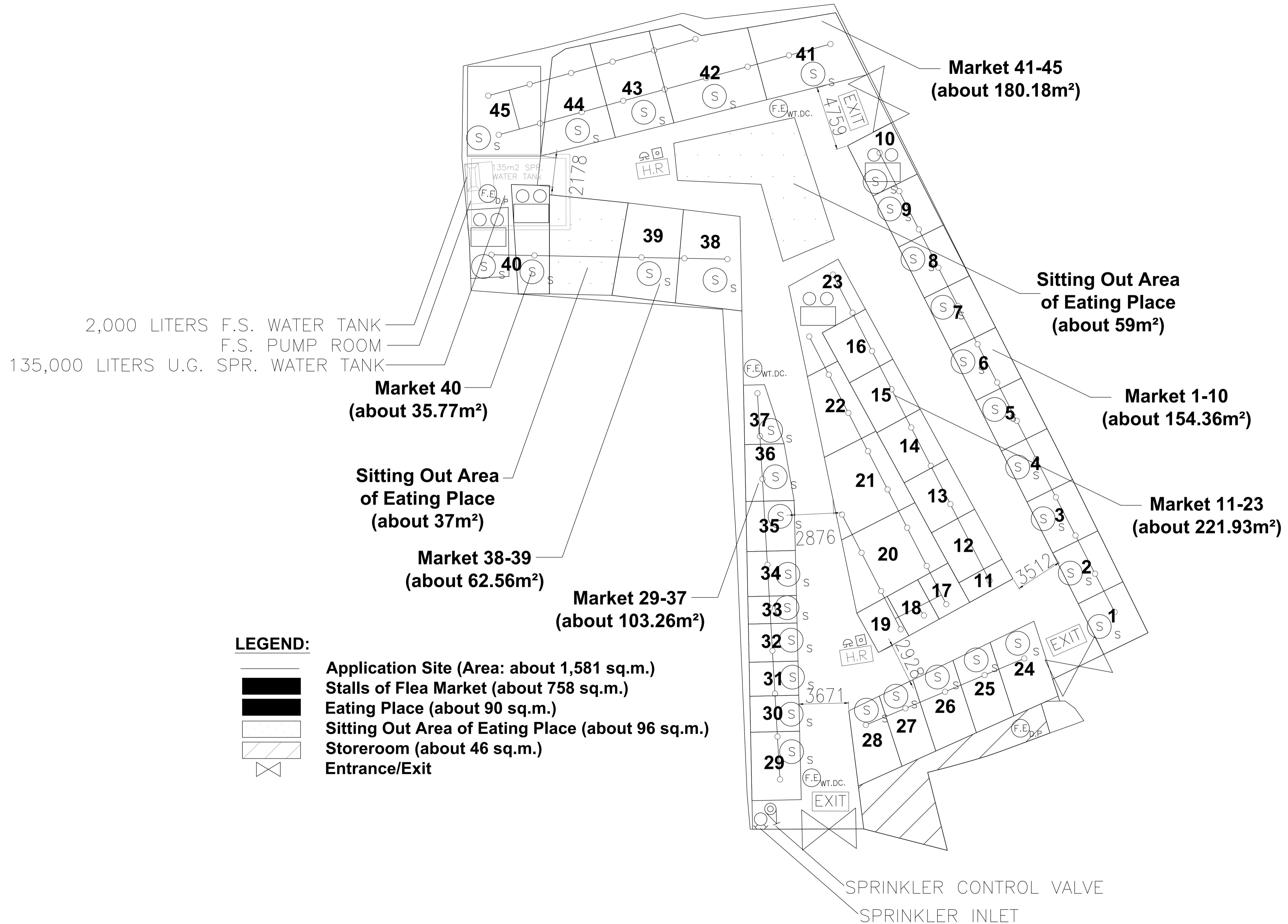
PROJECT

LOTS 398(PART), 399(PART), 400 AND ADJOINING GOVERNMENT LAND IN D.D.109, KAM SHEUNG ROAD, KAM TIN SOUTH, YUEN LONG, NEW TERRITORIES

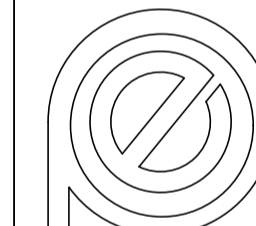
DRAWING TITLE

FS NOTES, LEGEND, ABBREVIATIONS AND DRAWING LIST

	INITIAL	DESIGNATION	DATE
DRAWN BY	WC	CAD	19-04-2026
DESIGNED BY	WC	SEng	19-04-2026
CHECKED BY	CM	PM	19-04-2026
APPROVED BY	-	-	-
PROJECT NO.	10089		
PAPER SIZE	A3	PLOT SCALE	1 : 1
DRAWING NO.	EP-20349-FS01		
SCALE	N. T. S.	REVISION	C



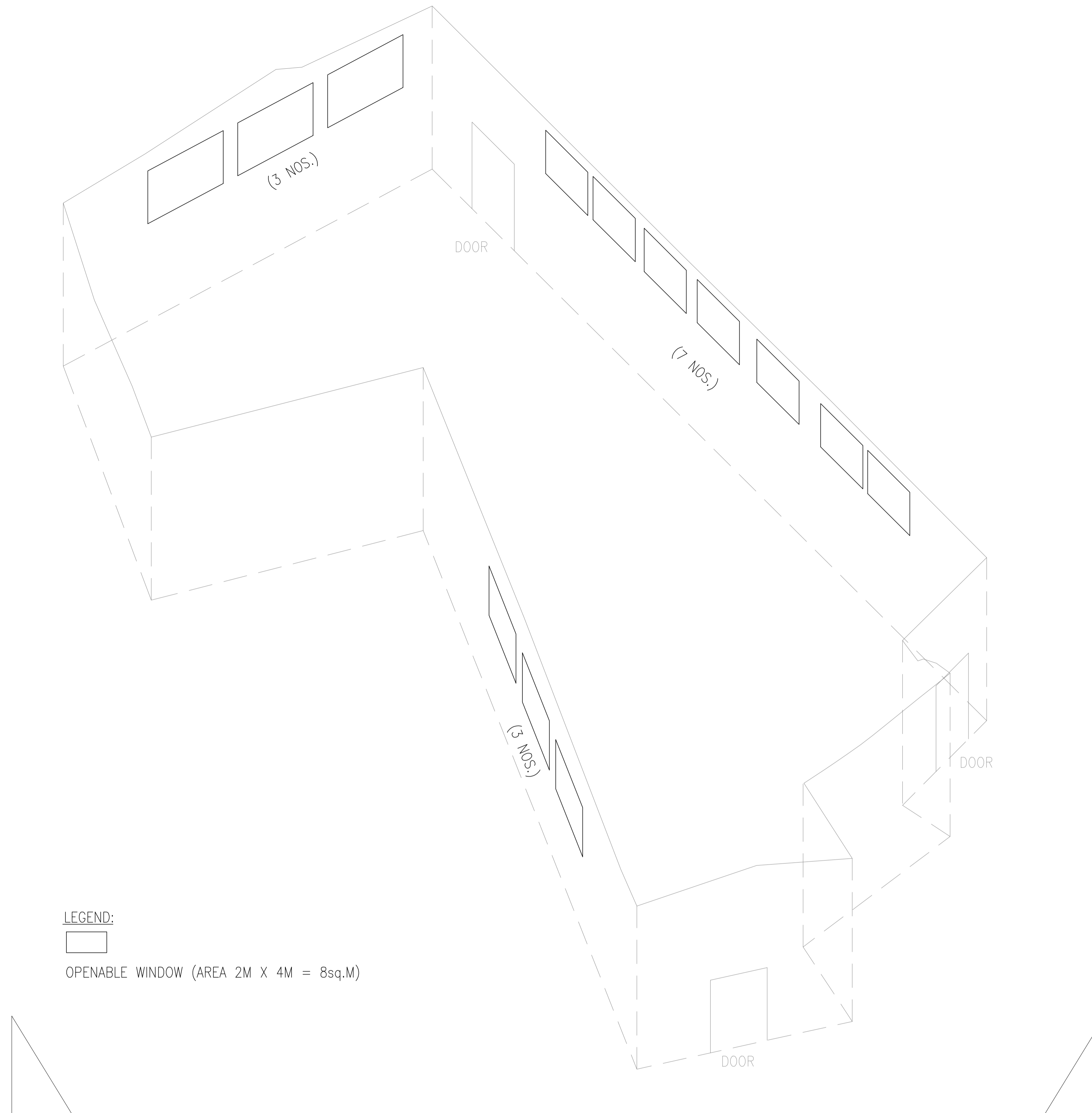
REV	DESCRIPTION	DATE	BY
C	FSD SUBMISSION	19-05-2026	WC
B	FSD SUBMISSION	26-04-2026	WC
A	FSD SUBMISSION	19-04-2026	WC

FSI CONTRACTOR
East Power Engineering Limited


PROJECT
 LOTS 398(PART), 399(PART), 400 AND ADJOINING GOVERNMENT LAND IN D.D.109, KAM SHEUNG ROAD, KAM TIN SOUTH, YUEN LONG, NEW TERRITORIES

DRAWING TITLE
 PROPOSED FIRE SERVICE INSTALLATION LAYOUT PLAN

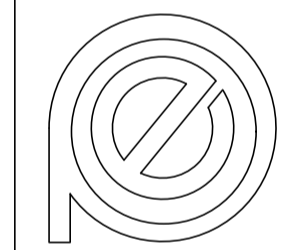
	INITIAL	DESIGNATION	DATE
DRAWN BY	WC	CAD	19-04-2026
DESIGNED BY	WC	SEng	19-04-2026
CHECKED BY	CM	PM	19-04-2026
APPROVED BY	-	-	-
PROJECT NO.	10089		
PAPER SIZE	A3	PLOT SCALE	1 : 1
DRAWING NO.	EP-20349-FS02		
SCALE	1 : 400@A3	REVISION	C



SECTION A-A

OPENABLE WINDOW AREA CALCULATION UNDER F.S.D. REQUIREMENT FOR COMPARTMENT EXCEEDING 7000m ³				
LOCATION	USABLE FL. AREA (m ²) PER FLOOR	OPENABLE WINDOW AREA REQUIRED	NOS. OF WINDOW PROVIDED (8M ² PER WINDOW)	OPENABLE WINDOW AREA PROVIDED
STRUCTURE 1	<u>1,582</u>	<u>1,582 X 6.25% = 98.875</u>	13	REFER TO ELEVATION-(A-A) = 104 TOTAL = <u>104</u> > <u>98.875</u>

REV	DESCRIPTION	DATE	BY
A	FSD SUBMISSION	10-06-2026	WC

FSI CONTRACTOR
East Power Engineering Limited


PROJECT
 LOTS 398(PART), 399(PART), 400 AND ADJOINING GOVERNMENT LAND IN D.D.109, KAM SHEUNG ROAD, KAM TIN SOUTH, YUEN LONG, NEW TERRITORIES

DRAWING TITLE
 6.25% WINDOW CALCULATION

	INITIAL	DESIGNATION	DATE
DRAWN BY	WC	CAD	19-04-2026
DESIGNED BY	WC	SEng	19-04-2026
CHECKED BY	CM	PM	19-04-2026
APPROVED BY	-	-	-
PROJECT NO.	10089		
PAPER SIZE	A3	PLOT SCALE	1 : 1
DRAWING NO.	EP-20349-FS03		
SCALE	N.T.S.	REVISION	A